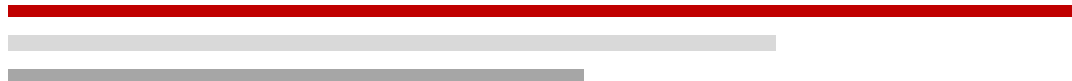
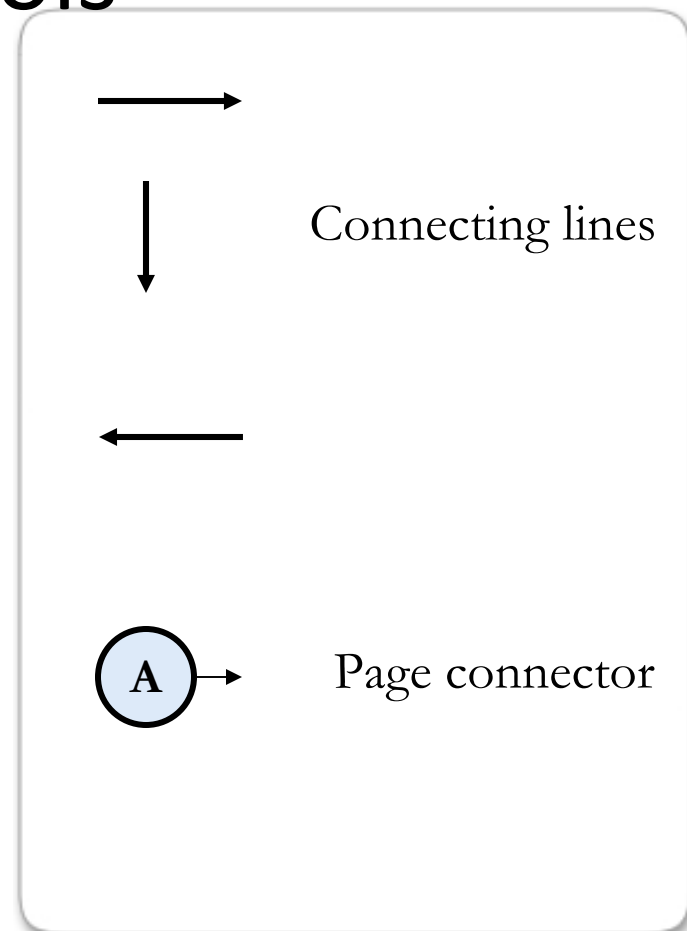
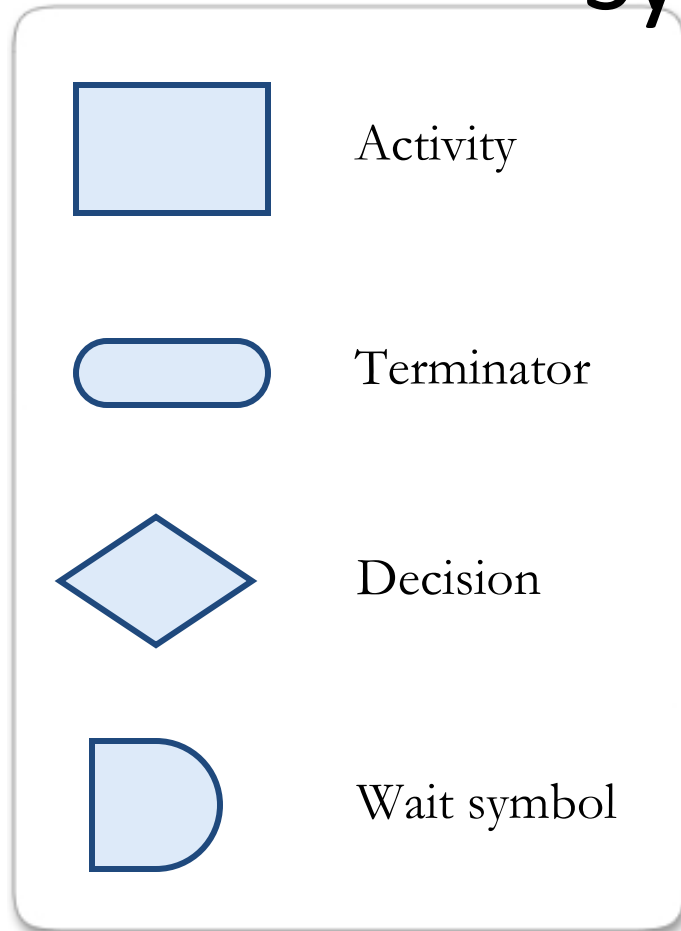


Flow Chart

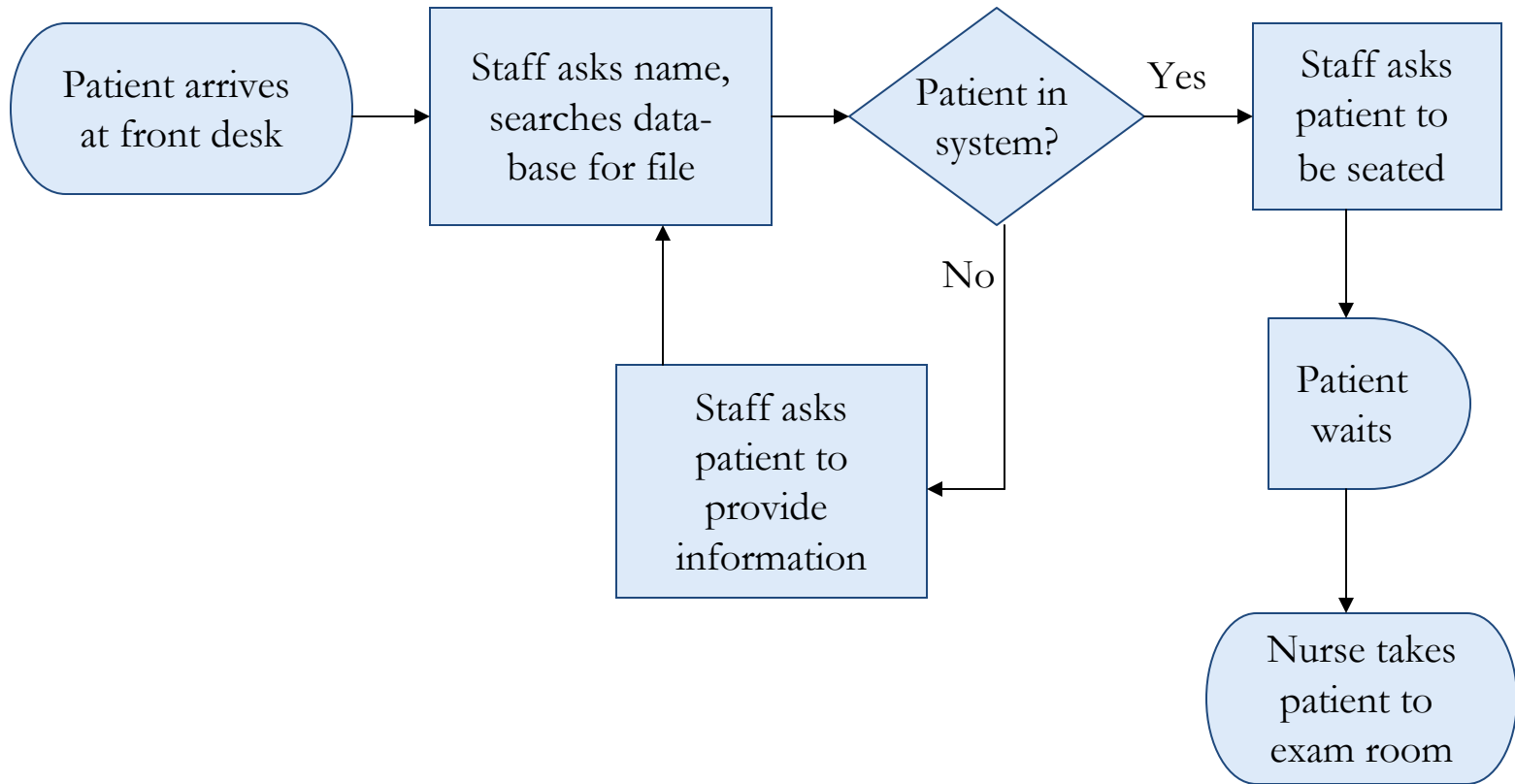
- Each team member will prepare a step by step flow chart of your team's current process for one of the following:
 - Linking newly diagnosed PLWHAs into HIV care
 - Bringing PLWHAs who have been lost to care back into ongoing HIV care



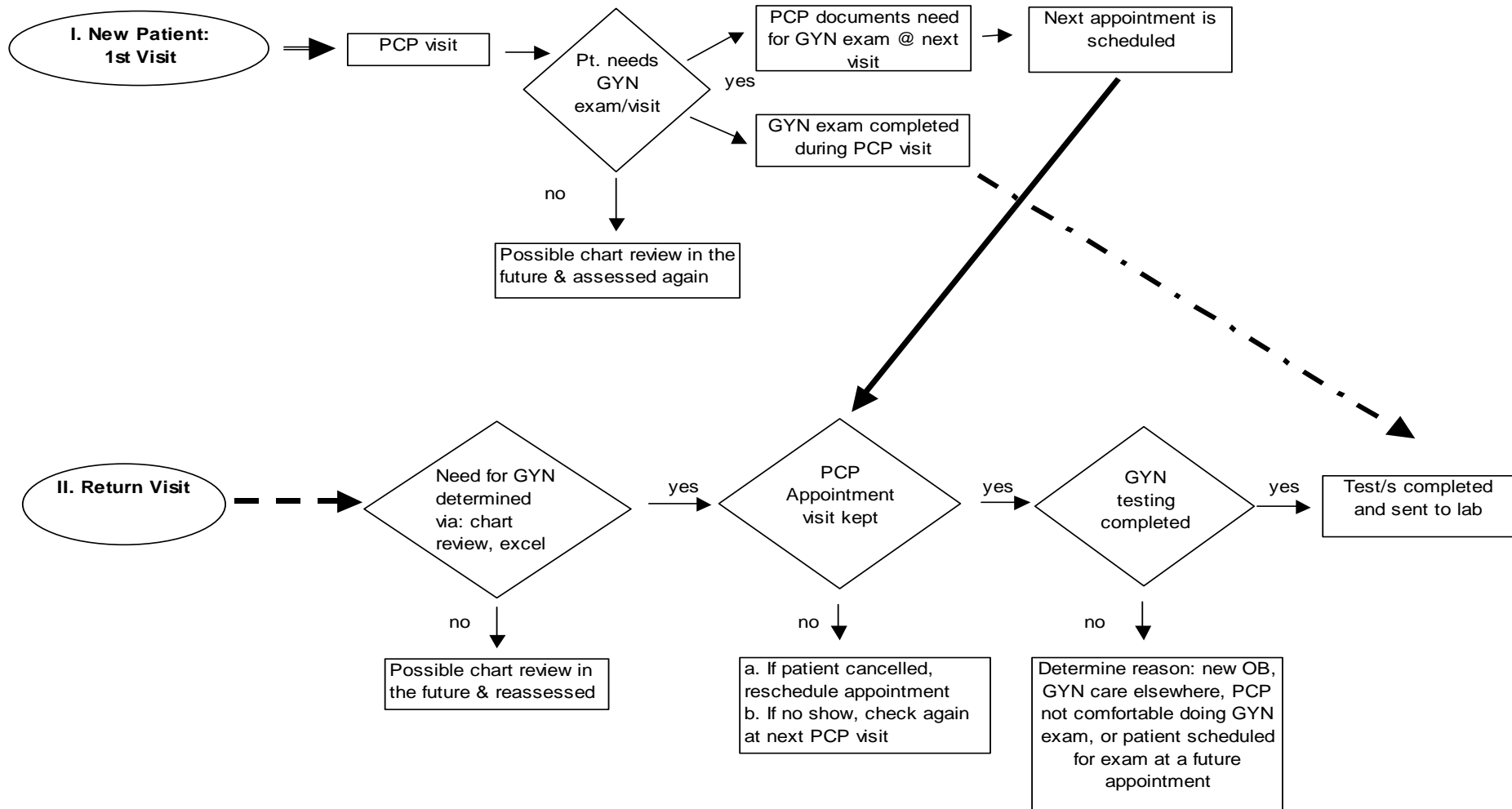
Most Commonly Used Flowchart Symbols



Flow Chart: Is This an Efficient Process?



QI Flow chart – Pap



Reversal of the Process

- Team members will be partnered with members of other NY Links teams
- Partners will then exchange their flowcharts
- Each of you will describe each other's process backwards, starting with the last step first.
- You will look for and discuss opportunities to improve or change the process for each program.
- You will redraw the flow chart accordingly.

